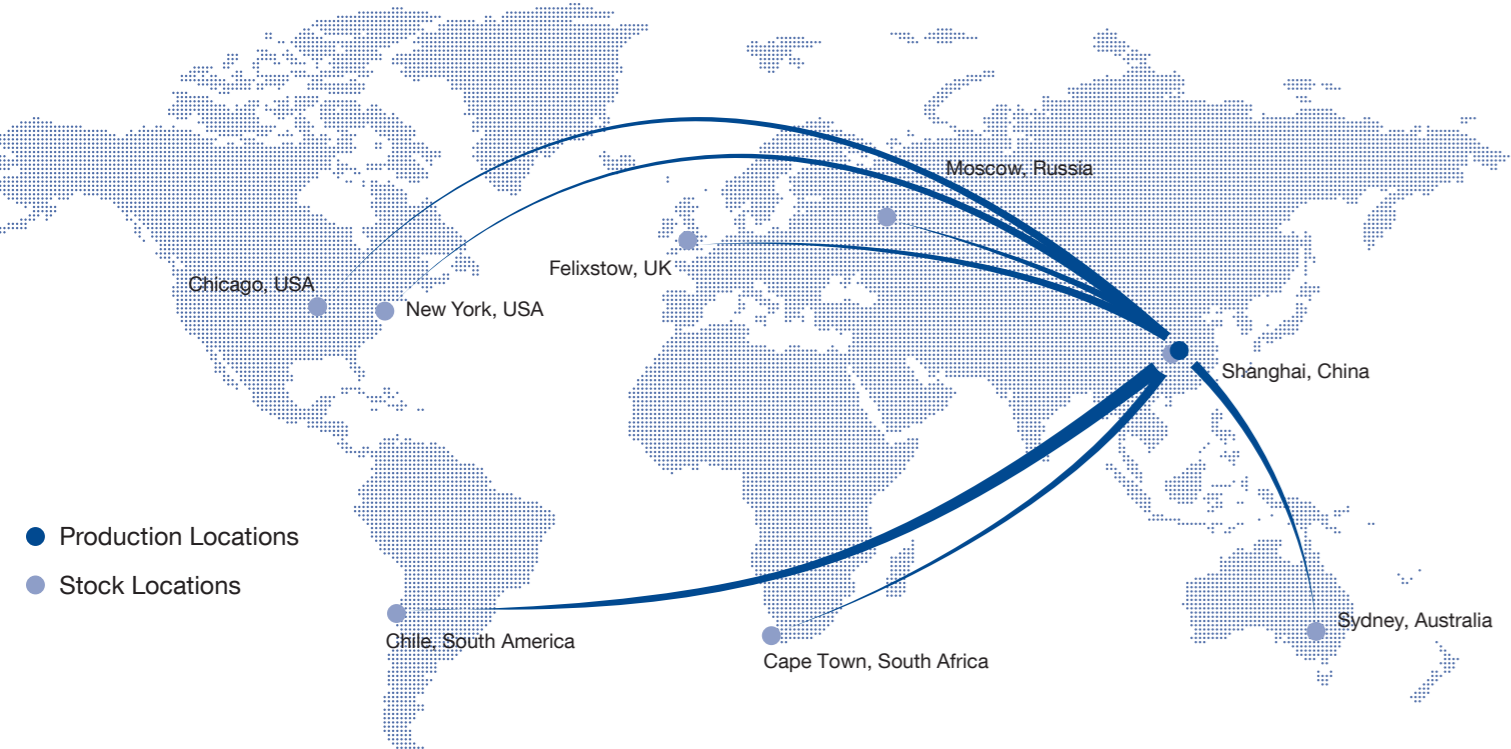


Stock Location & Staff Distribution



Stock Locations

Multipanel UK hold stock in the above locations, totalling approximately 10,000m² (107,000ft²) of warehouse storage space across the world.

Holding stock in these geographical areas enables Multipanel UK to have worldwide coverage and our products available to almost any location in the world, at impressive lead times.



Staff Distribution

Multipanel UK employ over 250 staff, spanning 6 continents.

Our staff distribution enables us to be truly local to our customer base whilst benefitting from the knowledge and support of an international organisation.

UK Head Office
Unit 6, Oak Business Units, Thorverton Road,
Mattford, Exeter, Devon, EX2 8FS
Tel: +44 (0) 1392 823015

Northern Europe Office
Deventerstraat 35,
NL-7311 LT Apeldoorn – Holland
Tel: +31 (0) 55 323 09 50

USA Office
5821 Hansen Road, Edina,
MN 55436, USA
Tel: +1 718 841 9940



Multipanel Corporate Brochure

Business Profile

Factory & Certification

Testing & Quality Control

Introduction

A world renowned manufacturing company, Multipanel UK design, produce and supply a large range of cutting edge composite materials and fabrication solutions.

Our global network not only serve specialised sectors, but also our core markets in Sign, Display, Architecture and Construction, offering customers a wide range of solutions harnessing the latest manufacturing technology and design principles.

Multipanel UK was built on a simple philosophy – we aim to offer the highest quality materials at the most competitive prices in the market. Sticking strictly to this philosophy has enabled us to grow as an international company and to also hold an impressive portfolio of satisfied customers, ranging from individual traders to some of the largest Blue Chip corporations in the world. To ensure the highest quality, we have invested heavily in new purpose built factories in Asia and Europe, working to strict quality control standards.

Today, Multipanel UK has offices in more than 8 countries and is represented in over 40 countries. The majority of our employees are based in Europe (UK, France and Germany) but also in countries which represent big opportunities for example China, Russia and Australia.

Portfolio

A brief view of Multipanel UK's product range:

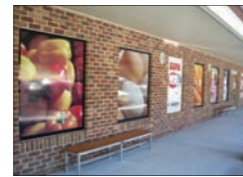
Alupanel
Aluminium Composite panel for Sign, Display and Architectural industries



Alupanel Lite
Aluminium Composite panel (flat application)



Ecopanel
Economy Aluminium Composite panel (flat application, perfect for Vinyl)



Alupanel Ultrawhite Digital
Specialist printing panel for Flatbed, UV and traditional printing.



Alupanel XT Series
Exterior Cladding panels for Architectural & Construction industries



Aluwall
Antimicrobial composite panel for clean environments



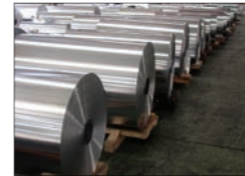
Aluhex
Aluminium Hexagonal Core panel for construction & transportation



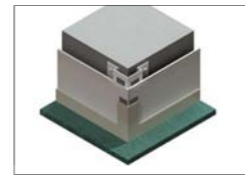
Alufoam
Fluted core panel ideal for customers needing a lightweight panel



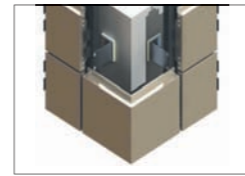
Alu Coil & Sheet
Coil & Sheet Aluminium for many industries



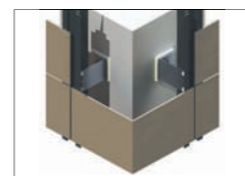
Cladding System 1
Cap Profile system



Cladding System 2
L1 cassette system



Cladding System 3
L2 flat clad system



Cladding System 4
Hoarding Profile System



Production Facilities

Established in 2003, Multipanel UK has rapidly grown into one of the most recognised Aluminium Composite manufacturers in the world.

The factory, based in China, is wholly managed by our UK office and houses state of the art manufacturing equipment operated by our conscientious, highly trained specialists.

With 100% production control held in the UK, the factory operate to



Production Line

strict European Quality Control standards. They hold ISO9001:2000 and ISO14001:2004, along with many other certificates (see below).

We have teams dedicated to continuous improvement and exceeding our strict quality control standards. Our control over production gives us the ability to not only offer bespoke products and finishes, but to guarantee the outstanding quality of everything we produce.

Certification		
TEST/CLASSIFICATION	CERTIFICATE NUMBER	TESTING ORGANISATION
ISO9001:2008	02509Q10102R2S	QMS
ISO14001:2004	04110E20070R0M	EIC
ISO140-3:1995	AU09114039-1 (R1)	Intertek
ISO4892-2:2006	AU09114039-1 (R1)	Intertek
EN438:2005	TC07/090020	UKTC
EN10002-1:2001	AU09114039-1 (R1)	Intertek
EN301:1993	AU09114039-1 (R1)	Intertek
EN13446:2002	AU09114039-1 (R1)	Intertek
EN1604:1997	AU09114039-1 (R1)	Intertek
EN13501-1:2002 B S1 D0	AU09114039-1 (R1)	Intertek
EN319:1993	AU09114039-1 (R1)	Intertek
EN1602:1997	AU09114039-1 (R1)	Intertek
EN12664:2001	AU09114039-1 (R1)	Intertek
EN1186-3/1/14:2002	GZATR071200944CM	SGS
REACH	AU09114039-1 (R1)	Intertek
BS476 PART 6 & 7 (CLASS 1 & 0)	GZML05110606	SGS
M1	K091185	LNE
RoHS	SZHJ174957	Intertek
RoHS	101189-601135	Bureau Veritas (LCIE)
RoHS	SHAH00148327	Intertek
BBA	10/4746	BBA
13501-1 A2 S1 D0 Euro Class A2	304819/304820	EXOVA



Coil Stock, Factory, China



Gloss content and colour testing, China Facotry



Paint line, China Factory

Testing Facilities

To ensure the high quality of our products, we have the following in-house testing equipment which all products are routinely tested on:-

- Pencil Hardness
- Coating Adhesive
- Coating Flexibility
- Impact Resistance
- Acid Resistance
- Alkaline Resistance
- Boiling Water Resistance
- Colour Gloss Content
- Colour Difference
- Peel Strength
- Heating Oven



Salt Spray test machine, China Factory

Any material that does not meet our quality standards will not be used in the compositing process.

Quality Control Measures

Aluminium:

* Upon Delivery, aluminium is thoroughly checked and any faulty items returned.

* A bending test will be performed to test mechanical properties of the aluminium. If it does not meet our standards the material will be returned
* Aluminium coil will be unwound and thoroughly cleaned with special chemical treatment

Paint:

A coating test will be performed on all new paint, if unsatisfactory results are recorded the paint will be rejected. Approved paint will be applied and the painted coil checked for any defects.

PE Core:

New PE Core will be weighed and its density checked to ensure it is of suitable quality. The appearance, smoothness and moisture percentage will all be tested.

Production tests:

During lamination, Peel Strength is tested every 30 minutes to ensure quality and consistency. After lamination, each panel will go through quality control and any damaged sheets will be removed from stock.

Final check:

Every sheet is marked with a batch number which allows the factory to trace the exact time, date, production run, aluminium batch and paint batch the product came from.